

Saxophone Major Scales

Extended Range

C Major



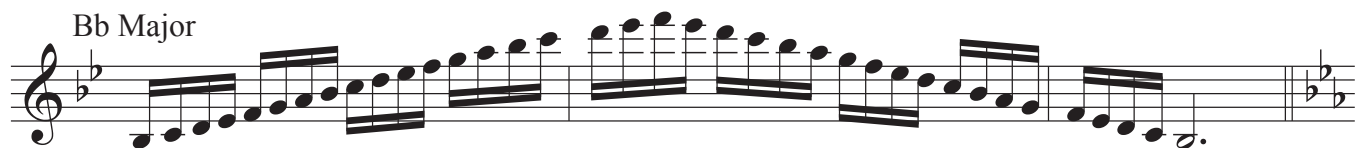
Musical notation for the C Major scale, extended range, in 4/4 time. The scale is written on a single treble clef staff, starting on middle C and extending to the second ledger line above. The notation includes a key signature of one sharp (F#) and a 4/4 time signature. The scale is presented as an ascending and descending sequence of eighth notes, with a final whole note chord at the end.

F Major



Musical notation for the F Major scale, extended range, in 4/4 time. The scale is written on a single treble clef staff, starting on F4 and extending to the second ledger line above. The notation includes a key signature of two flats (Bb, Eb) and a 4/4 time signature. The scale is presented as an ascending and descending sequence of eighth notes, with a final whole note chord at the end.

Bb Major



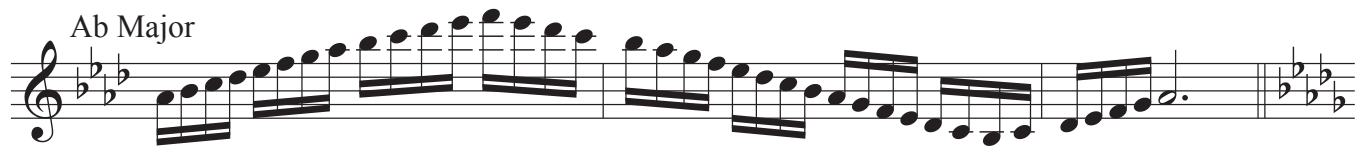
Musical notation for the Bb Major scale, extended range, in 4/4 time. The scale is written on a single treble clef staff, starting on Bb4 and extending to the second ledger line above. The notation includes a key signature of two flats (Bb, Eb) and a 4/4 time signature. The scale is presented as an ascending and descending sequence of eighth notes, with a final whole note chord at the end.

Eb Major



Musical notation for the Eb Major scale, extended range, in 4/4 time. The scale is written on a single treble clef staff, starting on Eb4 and extending to the second ledger line above. The notation includes a key signature of three flats (Bb, Eb, Ab) and a 4/4 time signature. The scale is presented as an ascending and descending sequence of eighth notes, with a final whole note chord at the end.

Ab Major



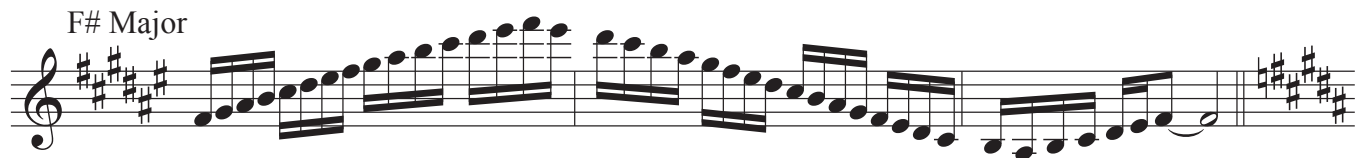
Musical notation for the Ab Major scale, extended range, in 4/4 time. The scale is written on a single treble clef staff, starting on Ab4 and extending to the second ledger line above. The notation includes a key signature of four flats (Bb, Eb, Ab, Db) and a 4/4 time signature. The scale is presented as an ascending and descending sequence of eighth notes, with a final whole note chord at the end.

Db Major



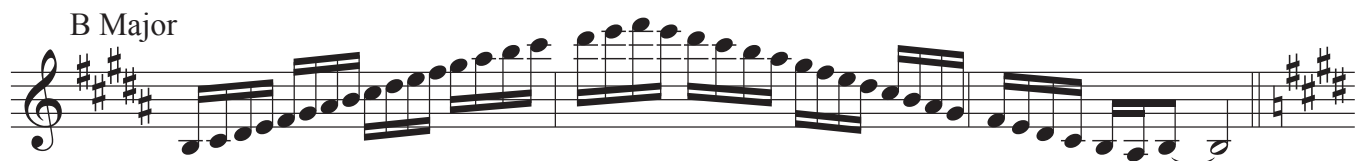
Musical notation for the Db Major scale, extended range, in 4/4 time. The scale is written on a single treble clef staff, starting on Db4 and extending to the second ledger line above. The notation includes a key signature of five flats (Bb, Eb, Ab, Db, Gb) and a 4/4 time signature. The scale is presented as an ascending and descending sequence of eighth notes, with a final whole note chord at the end.

F# Major



Musical notation for the F# Major scale, extended range, in 4/4 time. The scale is written on a single treble clef staff, starting on F#4 and extending to the second ledger line above. The notation includes a key signature of three sharps (F#, C#, G#) and a 4/4 time signature. The scale is presented as an ascending and descending sequence of eighth notes, with a final whole note chord at the end.

B Major

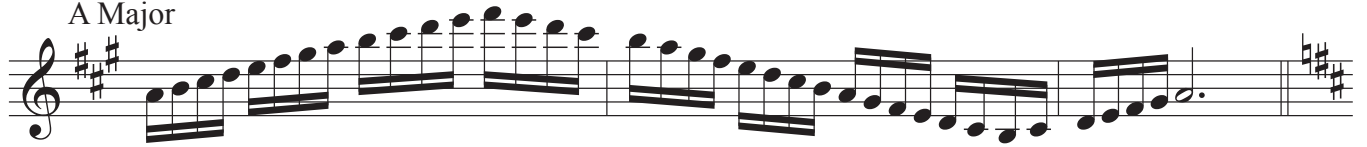


Musical notation for the B Major scale, extended range, in 4/4 time. The scale is written on a single treble clef staff, starting on B4 and extending to the second ledger line above. The notation includes a key signature of two sharps (F#, C#) and a 4/4 time signature. The scale is presented as an ascending and descending sequence of eighth notes, with a final whole note chord at the end.

E Major



A Major



D Major



G Major

