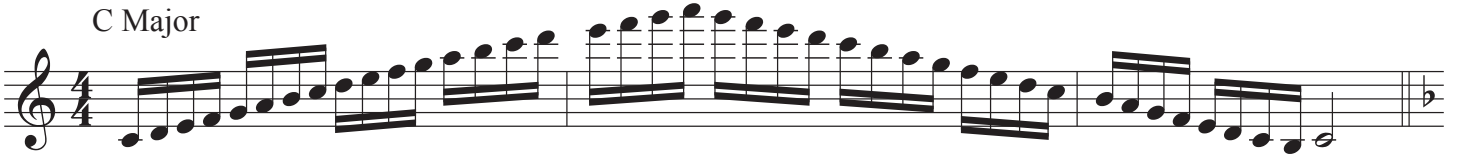


# Flute Major Scales - Extended Range

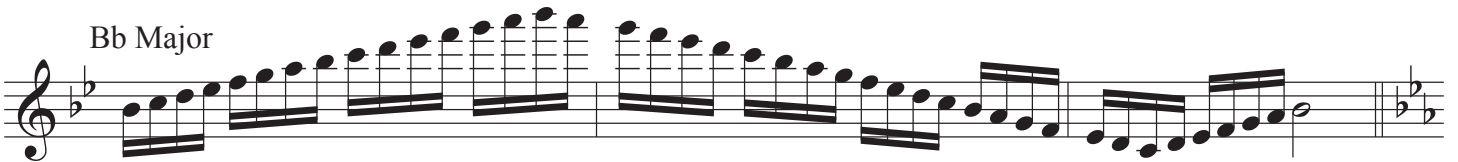
C Major



F Major



Bb Major



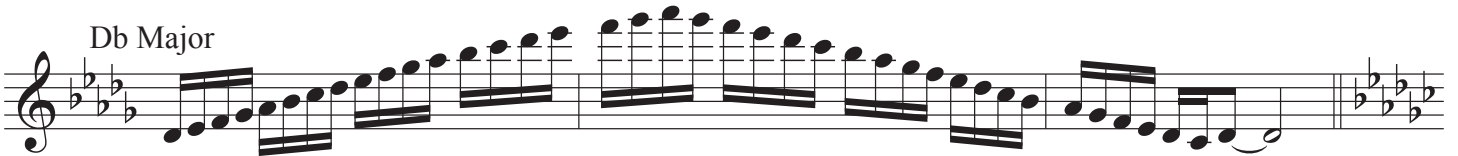
Eb Major



Ab Major



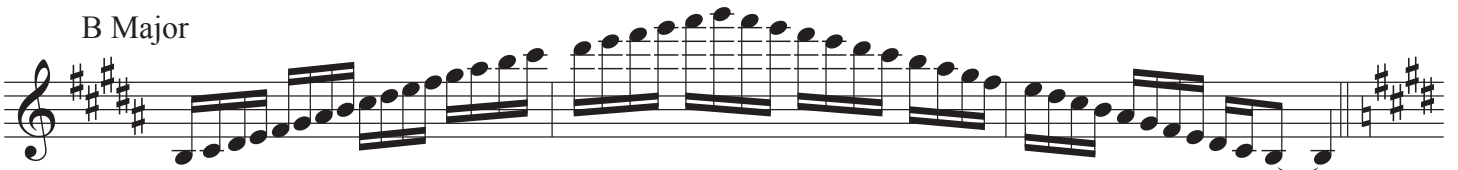
Db Major



F# Major



B Major



E Major

Musical notation for the E Major scale in treble clef. The key signature has three sharps (F#, C#, G#). The scale is written in eighth notes, ascending and then descending. The notes are: E4, F#4, G#4, A4, B4, C#5, D5, E5, D5, C#5, B4, A4, G#4, F#4, E4. The piece ends with a double bar line and a key signature change to E major.

A Major

Musical notation for the A Major scale in treble clef. The key signature has two sharps (F#, C#). The scale is written in eighth notes, ascending and then descending. The notes are: A4, B4, C#5, D5, E5, F#5, G#5, A5, G#5, F#5, E5, D5, C#5, B4, A4. The piece ends with a double bar line and a key signature change to A major.

D Major

Musical notation for the D Major scale in treble clef. The key signature has two sharps (F#, C#). The scale is written in eighth notes, ascending and then descending. The notes are: D4, E4, F#4, G#4, A4, B4, C#5, D5, E5, F#5, G#5, A5, G#5, F#5, E5, D4. The piece ends with a double bar line and a key signature change to D major.

G Major

Musical notation for the G Major scale in treble clef. The key signature has one sharp (F#). The scale is written in eighth notes, ascending and then descending. The notes are: G4, A4, B4, C#5, D5, E5, F#5, G5, F#5, E5, D5, C#5, B4, A4, G4. The piece ends with a double bar line and a key signature change to G major.